

Suture Evaluation Simulator

Simple interrupted skin suturing can be evaluated quantitatively by operation time, tension end force added to the skin, evenness of stitch placement as well as that of each stitch and the degree of the wound closure. Objective evaluation not only facilitates assessing trainees' achievement degree. By showing progress made along with repeated trials, it also encourages each trainee and promotes more effective learning. True-to-life needle tip resistance, compact and space saving design.

- Evaluation mode:
self learning with evaluation
- Learning mode:
watch demonstration movie
- Examination mode:
students' achievement examination



Set Includes:

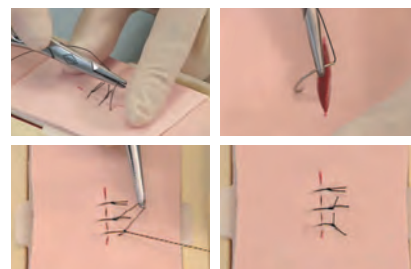
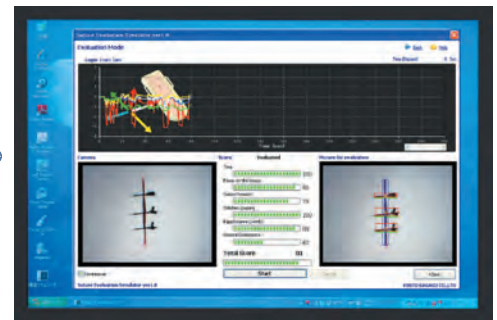
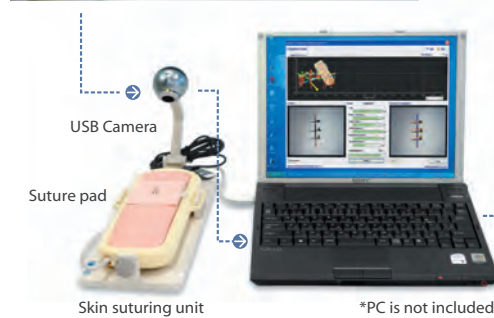
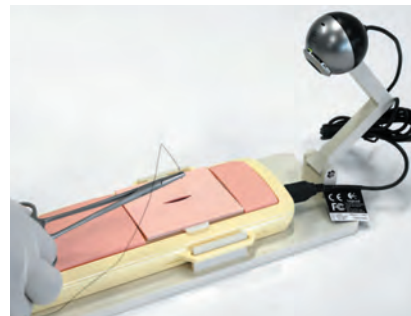


- Simulated skin 40 pcs
- Skin suturing unit
- USB Camera
- Software (CD)
- Carrying case

KYOTO KAGAKU

USA Office:
3109 Lomita Boulevard, Torrance,
CA 90505-5108, USA
Tel: 1-310-325-8860
Fax: 1-310-325-8867

Head Office and Factories:
15 Kitanekeya-cho, Fushimi-ku,
Kyoto, 612-8388, JAPAN
Tel: +81-75-605-2510
Fax: +81-75-605-2519
www.kyotokagaku.com
rw-kyoto@kyotokagaku.co.jp



Simple interrupted suturing

- Time
- Force on the tissue
- Suture tension
- Stitches spacing
- Equidistance (width)
- Wound Dehiscence