

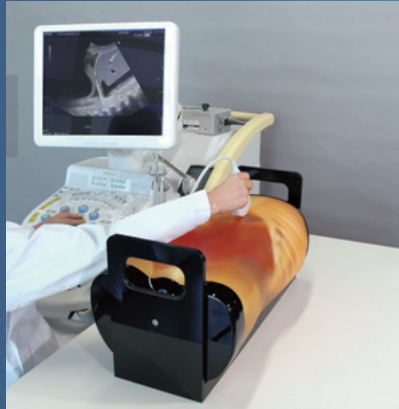
# FAST/Acute Abdomen Phantom

# “FAST/ER FAN”

**NEW**

Product No. **US-5**

Focused Assessment with Sonography for Trauma



**Production supervision:**

Junji Machi, MD, PhD  
University of Hawaii at Manoa and Kuakini Medical Center

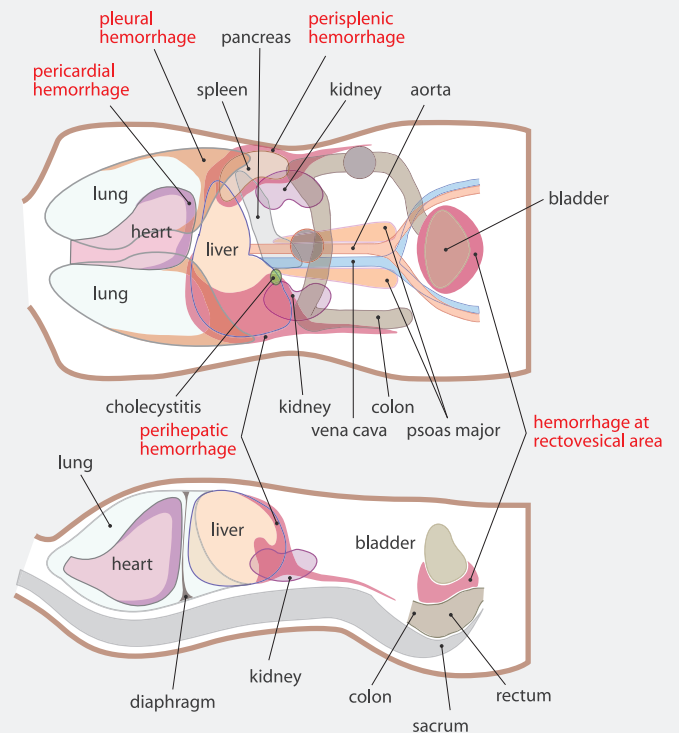
An innovative phantom for repetitive training of FAST as an adjunct to the ATLS primary survey.

This phantom has been developed to provide simulated training in FAST (Focused Assessment with Sonography for Trauma); an ultrasound examination directed at identifying the presence of free intraperitoneal or pericardial fluid in the traumatic patients, which allows detecting the possible cause of shocks such as mass hemothorax, intraperitoneal hemorrhage or cardiac tamponade.

**Training items:**

- FAST procedures:  
Internal hemorrhage at perihepatic, perisplenic, pelvis and pericardium area.
- Sonography for acute patients:  
Internal hemorrhage at pericardial, bilateral chambers as well as intra-abdominal hemorrhage around the liver, the spleen and the urinary bladder.  
Pathologies including cholecystitis, an aortic aneurysm, a lesion on the colon.

- pericardial hemorrhage
  - pleural hemorrhage
  - intra-abdominal hemorrhage
  - tumor
- \*The small intestine is also embedded.



**KYOTO KAGAKU**

15 Kitanechoya-cho, Fushimi-ku, Kyoto, 612-8388, JAPAN  
Tel: +81-75-605-2510 Fax: +81-75-605-2519  
www.kyotokagaku.com  
rw-kyoto@kyotokagaku.co.jp

## FAST and Acute Abdomen Pathology



① Cardiac tamponade



② Right upper abdominal bleeding



③ Left upper abdominal bleeding



④ Pelvic bleeding



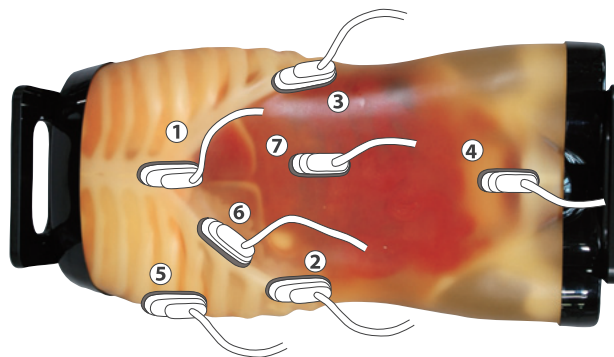
⑤ Pleural bleeding



⑥ Peri-hepatic bleeding



⑦ Abdominal aortic aneurysm

**Set includes:**

- 1 Ultrasound phantom with carrying base
- 1 Tutorial Manual (DVD)

**Materials:**

- soft tissue and organs: Urethane base resin
- synthetic bones: Epoxy base resin
- size: approx. 61 x 30 x 30 cm
- weight: approx. 31 kg