

⚠ Caution | Do not mark on the model with a pen or leave printed materials in contact with the model's surface. Ink marks on the model are not removable.

MW22

Patient Care Simulator "Cherry"

Instruction Manual



Contents

● Introduction

Manufacturer's note/DOs and DON'TsP.1

● Before you start

Set includesP.2

● Preparation

Setting of the legsP.3

● Training

- Handling of the modelP.4
- Oral and denture careP.4
- Oxygen inhalationP.4
- Intranasal and intraoral catheterP.4
- Tracheotomy careP.4
- TPN and PEG careP.5
- Pressure sores careP.5
- Stomach pumpingP.6
- Stoma careP.7
- Urinary catheterization, enema, suppository insertion, perineal careP.7
- Subcutaneous injectionP.8
- Gluteal injectionP.8
- Wound careP.8
- IV injection and careP.9
- PICC careP.9
- Subcutaneous and IM injectionP.10

Introduction

Manufacturer's note

Cherry is a basic patient care manikin for introductory nursing. The manikin can sit upright without support. Soft life-like materials provides realistic hands-on training. A basic full body, nursing manikin offers training for day-to-day patient care for health care professionals.

● Features

- Able to sit upright without support
- Seamless limbs including fingers and toes
- TPN and IV routes to simulate patients with catheter lines
- True-to-life joint patient handling
- Pressure Ulcer varies in depth depending location
- Oxygen/nasal cannula
- Application of restraints
- Dressing wrap capability
- Subcutaneous injection
- Wound dehiscence care

● Training items

- Oral and denture care
- Stomach pumping
- Nasogastric tube placement
- Oxygen/nasal cannula placement
- Tracheotomy care and management
- TPN and PICC care
- Intramuscular injection
- Body positioning
- Patient handling
- Passive exercise
- Change of clothes
- PEG care
- Pressure sores care
- IV insertion and care
- Stoma care
- Subcutaneous injection
- Urinal catheterization
- Enema
- Suppository insertion
- Perineal care
- Wound care

⚠ DOs and DON'Ts

DOs

Handle the manikin and the components with care.

Storage in a dark, cool space will help prevent the skin colours from fading.

The manikin's skin may be cleaned with a wet cloth, if necessary, using mildly soapy water or diluted detergent.

DON'Ts

Do not let ink from pens, newspapers, this manual or other sources come in contact with the manikin, as they cannot be cleaned off the manikin skin.

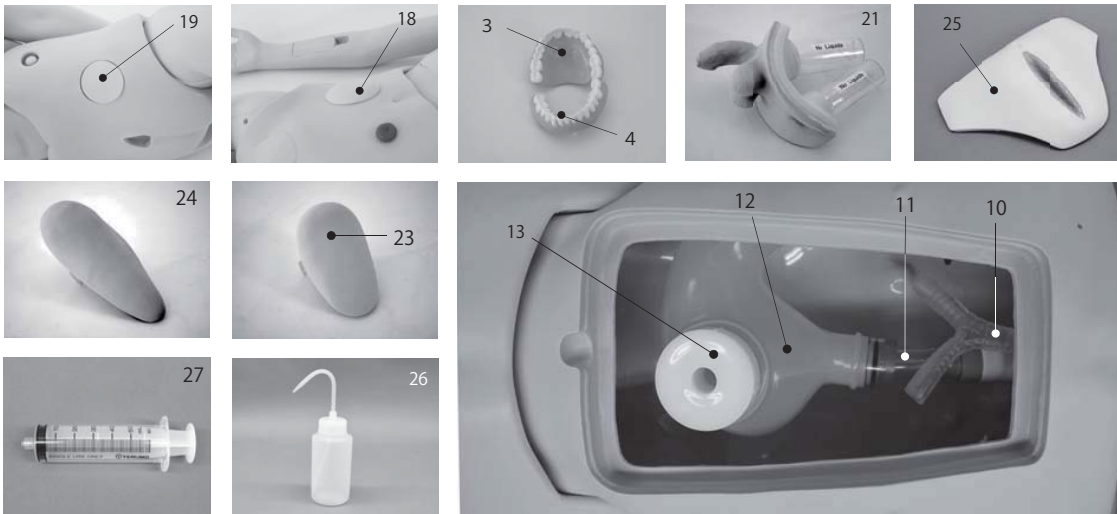
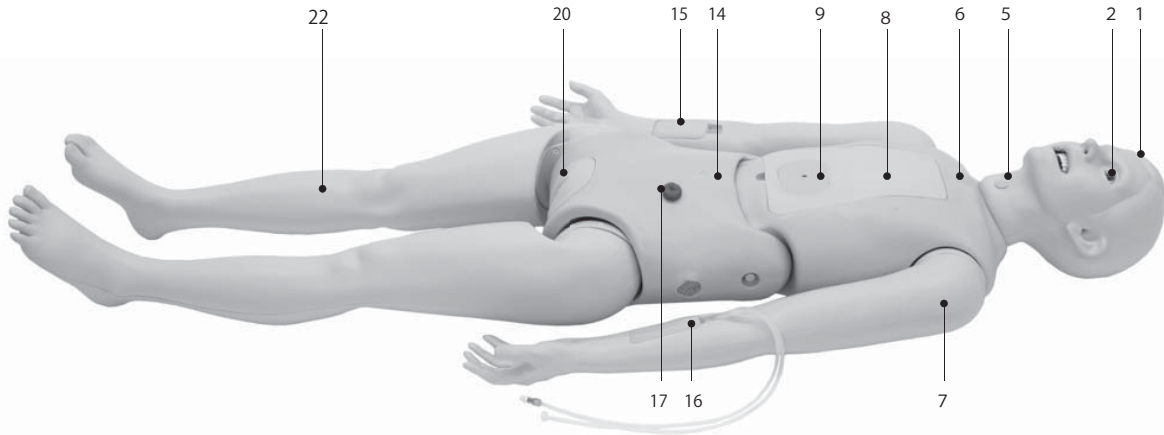
Never use organic solvent like paint thinner to clean the skin, as this will damage the simulator.

Before training

Set includes

Set includes

Before your first use, ensure that you have all components listed below.

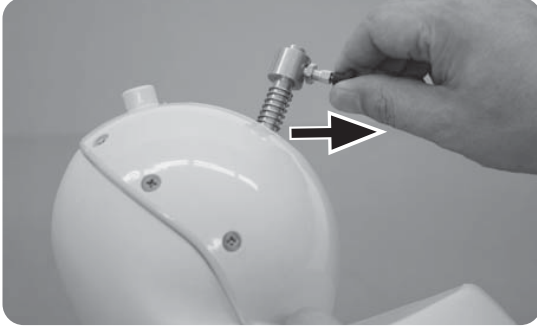


- | | | |
|-------------------------|--------------------------------|--------------------------------|
| 1. Head | 10. Bronchi | 19. Gluteal injection pad |
| 2. Eyes | 11. Esophagus | 20. Female genitalia |
| 3. Upper Denture | 12. Stomach | 21. Male genitalia |
| 4. Lower Denture | 13. Stomach cap | 22. Legs |
| 5. Tracheostomy opening | 14. Lumbar | 23. Femoral IM injection pad |
| 6. Chest | 15. Spacer | 24. Upper arm IM injection pad |
| 7. Arms | 16. IV injection pad | 25. Wound care pad |
| 8. Chest cover | 17. Stoma | 26. Bottle |
| 9. PEG opening | 18. Subcutaneous injection pad | 27. Syringe |

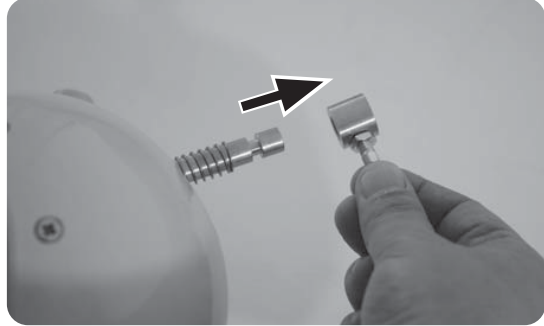
Setting of the legs

Note Legs are separated to be packaged. Please connect the legs to the torso before training.

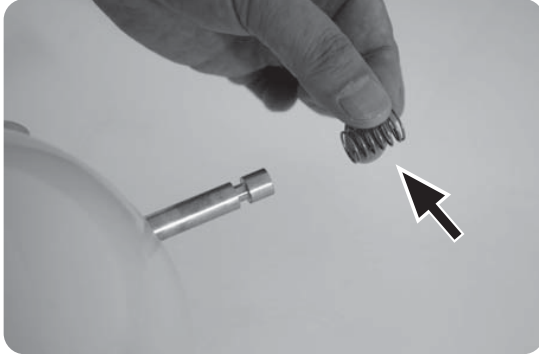
① Pull the black knob to unlock the stopper.



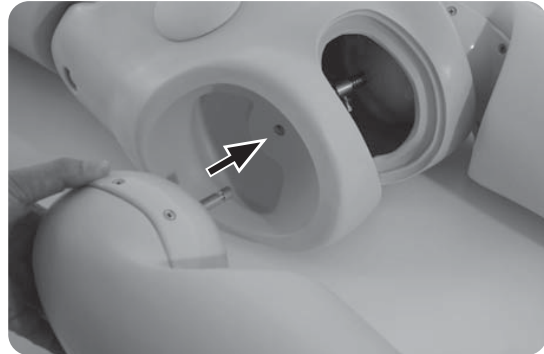
② Keep pulling the knob and remove the stopper from the metal rod.



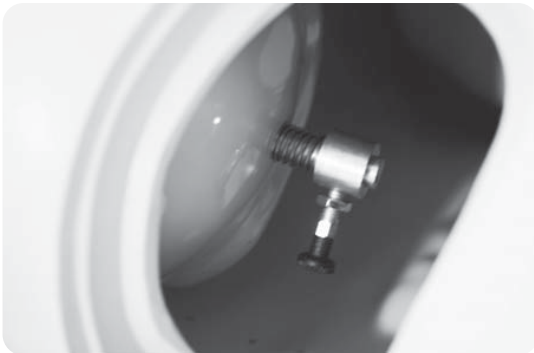
③ Pull out the spring.



④ Insert the metal rod to the hole of the model.



⑤ Set the spring and stopper to fix the leg.



⑥ Completed. Then set the other leg.



Caution Be careful not to lose the spring or stopper in the model.

Training

Handling of the model
Oral and denture care
Oxygen inhalation

Intranasal and
intraoral catheter
Tracheotomy care

Handling of the model

- True-to-life articulation for patient positioning, passive exercise, ect.
- Able to sit in an upright position without support.
- Seamless arms and legs enable the training of bed bathing and foot bathing to be more realistic.



Caution

Choose a pajama set which does not cause color migration to the manikin. (Manikin height is approx. 62 inch)

Oral and denture care

- Removing
Upper denture: Pull the denture downward.
Lower denture: Pull the denture upward.
- Setting
Hold the denture and insert the pin of the denture into the hole of the mouth.
Push the center and both side of denture to fix the denture firmly.



Both upper and lower denture are fixed with the pin of the denture at its center and left side.

Oxygen inhalation



Nasal cannula can be placed for oxygen inhalation.

Intranasal and intraoral catheter insertion



- ①Catheter can be inserted to stomach through nasal and oral.

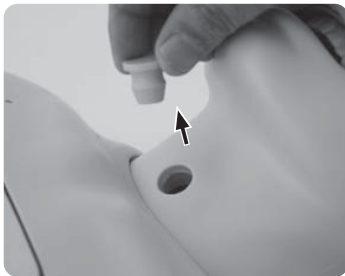
Recommended catheter size: 12Fr

Caution

Liquid can not be injected through intranasal or intraoral catheter.

Setting of tracheotomy catheter

- ①Pull up the plug.



- ②Set and fix a tracheotomy catheter. After the training, plug the tracheotomy plug in to the tracheotomy.

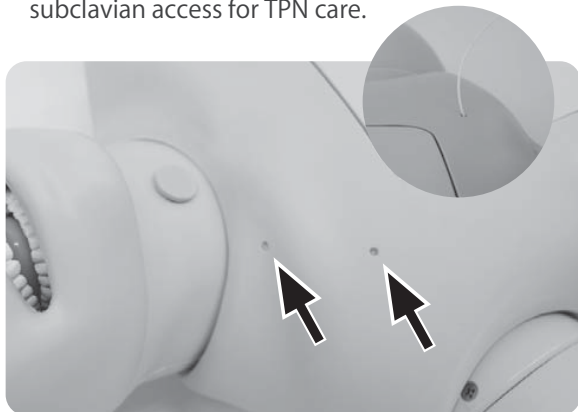
Recommended tracheotomy catheter size: ID8mm, OD11mm

Caution

Suction with liquid can not be performed however tracheotomy is connected to trachea of the model.

TPN and PEG care

①Catheter can be inserted at subclavicular and subclavian access for TPN care.



②PEG catheter can be set for PEG care.

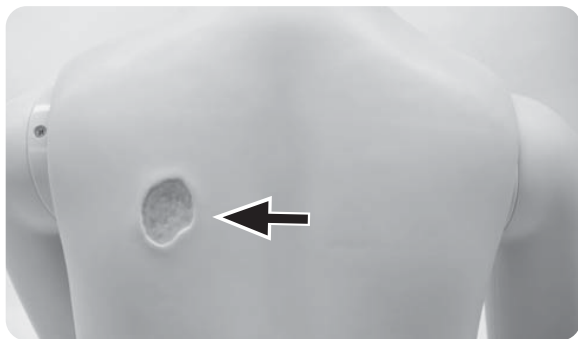
Recommended CV catheter size: 4Fr x 60cm
Recommended PEG catheter size: 20Fr x 34mm



Caution Liquid can not be injected from the holes for TPN care or PEG.

Pressure sores care

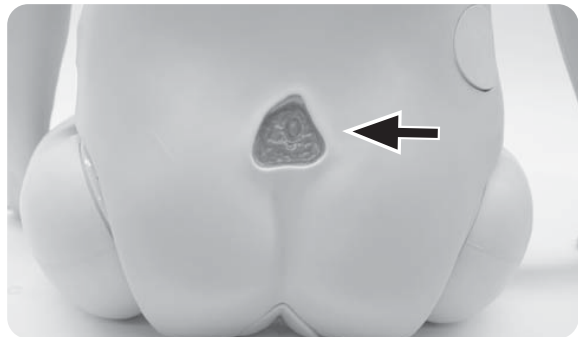
①Pressure sore at scapula (Stage 1)



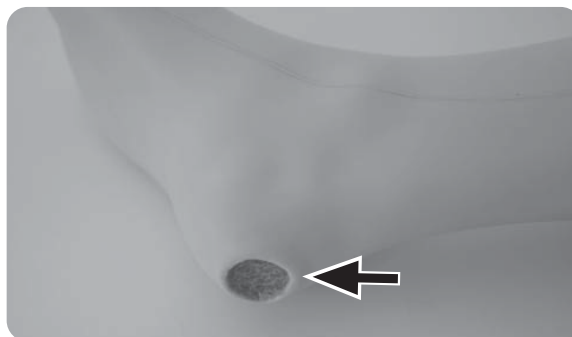
②Pressure sore at great trochanter (Stage 2)



③Pressure sore at sacral bone(Stage 4)



④Pressure sore at heel (Stage 3)



Removal of stomach

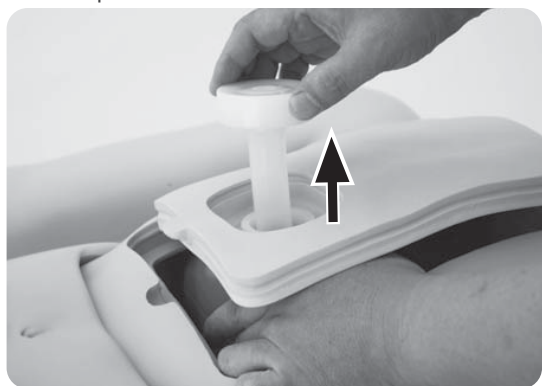
① Open the chest cover by pulling the cover at the slit.



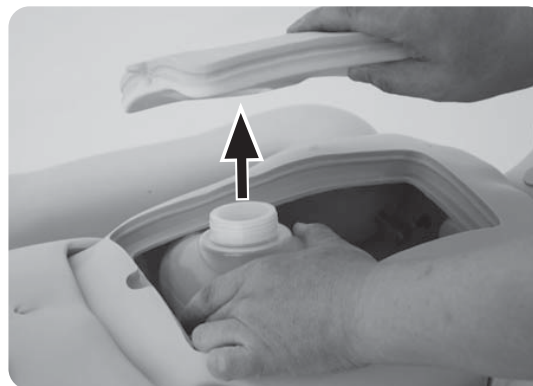
② Remove the PEG cover.



③ Hold the stomach in the model and unscrew the cap of the stomach.



④ Remove the chest cover.



⑤ Pull the esophagus tube from the stomach. The stomach can be removed from the model.



⑥ Completed. Stomach can be set by reversing the steps ①-⑤.



Stoma care



Utilize for the training of stoma care.

Female catheterization, Enema, Suppository insertion, Perineal care

① Pull the edge of the genitalia unit using your fingers.



② Remove the genitalia unit.



Male catheterization, Enema, Suppository insertion, Perineal care



① Pull the edge of the genitalia unit and remove it.

Recommended catheter size: Nelaton catheter 13Fr
Balloon catheter 16Fr

Caution

Liquid can not be injected to bladder, uterus and rectum.

Subcutaneous injection

① Push the edge of the pad by finger and remove the pad.



② Set the pad in correct direction.



Caution Liquid can not be injected to the subcutaneous injection pad.

Gluteal injection



① Push the edge of the pad by finger and remove the pad.



※ Set the pad in correct direction by following the guide of the pad and the body.

Caution Liquid can not be injected to the gluteal injection pad.

Wound care



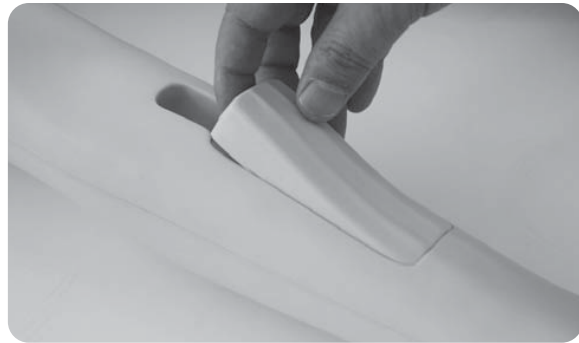
① Set the would care pad on the stoma and subcutaneous injection pad and adjust to fit each other.

IV injection

① Pull the pad by the finger from the slit and remove the pad.



※ The spacer is in right arm. IV injection and care training is available on both arms.

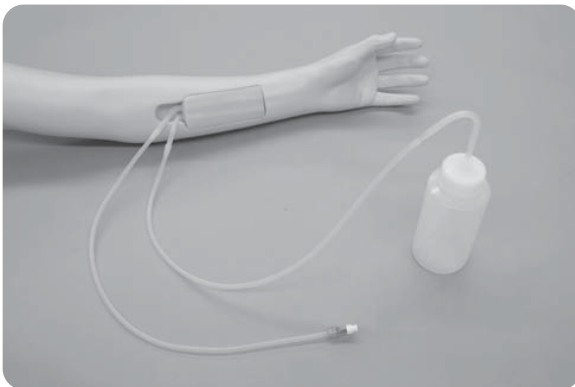


IV injection preparation

① Fill the bottle with water. Connect the tube of the injection pad to the bottle.



② Connect another tube of the injection pad to the syringe. Slowly pull the syringe to fill the pad with water.

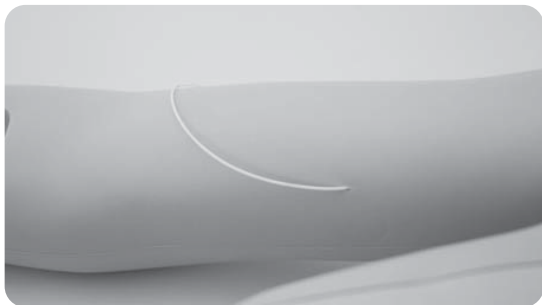


③ Completed.

Caution

Slowly pull the syringe or the vein in the injection pad may be damaged. If the syringe can not be pulled smoothly, check the connection of the tube and the syringe.

PICC care



①PICC catheter can be set on the right upper arm for PICC care training.

Caution

- Liquid can not be injected to the PICC opening.
- The PICC opening is only 2cm depth. Cut the catheter to set it.

Subcutaneous and IM injection

①Clip the injection pad onto the upper arm.



②Clip the IM injection pad on to the thigh.



Note Liquid can be injected to the subcutaneous and IM injection pad.

After training

①Push the attachment plate inward, pull out the edge of the skin between the attachment and the transparent back plate.



②Take off the skin carefully and remove the sponge and transparent back plate.



③Squeeze the sponge. After all parts get completely dry, reassemble them carefully.



Caution Do not pull or twist the sponge. Excessive force may cause breakage.



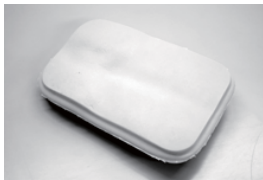
Caution

Do not mark on the model with a pen or leave printed materials in contact with the model's surface. Ink marks on the model are not removable.

For inquiries and service, please contact your distributor or KYOTO KAGAKU CO., LTD.

Consumable parts

code	name
11401-010	Insulin injection pad
11401-020	Gluteal IM pads
11401-030	Female genitalia unit
11401-040	Male genitalia unit
11388-200	Injection pad for median antebrachial vein
11401-050	Shoulder IM pads (a pair)
11401-060	Thigh IM pads (a pair)
11401-070	Wound care pad



6 insulin injection pads



4 gluteal IM pads



1 female genitalia units



1 male genitalia units



2 injection pads for median antebrachial veins



2 pairs of 2 shoulder IM pads



2 pair of 2 thigh IM pads



1 wound care pads

KYOTO KAGAKU co.,LTD

URL • <http://www.kyotokagaku.com> e-mail • rw-kyoto@kyotokagaku.co.jp



■ Main Office and Factory

15 Kitanechoya-cho Fushimi-ku Kyoto 612-8388, Japan
Telephone : 81-75-605-2510
Facsimile : 81-75-605-2519

■ Kyotokagaku America Inc. : USA, Canada, and South America

3109 Lomita Boulevard, Torrance, CA 90505-5108, USA
Telephone : 1-310-325-8860
Facsimile : 1-310-325-8867

The contents of the instruction manual are subject to change without prior notice.
No part of this instruction manual may be reproduced or transmitted in any form without permission from the manufacturer.
Please contact manufacturer for extra copies of this manual which may contain important updates and revisions.
Please contact manufacturer with any discrepancies in this manual or product feedback. Your cooperation is greatly appreciated.