

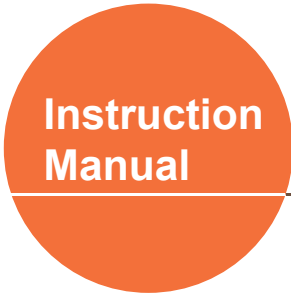
Caution:

Do not mark on the phantom with pen or leave printed materials contacted on its surface.
Ink marks on the phantom will be irremovable.

US-8

Pediatric FAST/Acute Abdomen Phantom

Product Supervision:
Shunsuke Nosaka, MD, PhD
Director of Radiology
National Medical Center for Children and Mothers



Contents

- **Please read before training**
 - General information P. 1
- **Preparation/ Training**
 - 1. Preparation P. 2
 - 2. Training session P. 2
 - 3. After training P. 2

This world's first pediatric ultrasound torso phantom provides opportunities of hands-on training in ultrasound examination of young patients.
Facilitates training in pediatric ultrasound that is a crucial modality, especially for radiosensitive children.
This product is intended to be used for medical training. Do not use for other than the intended purpose.

● **Features**

1. The phantom includes life-size 2-year-old thoracoabdominal organs, a bone structure, free fluid to learn FAST procedures and pathologies that are commonly seen in pediatrics.
2. With this phantom, trainees can acquire skills in basics of pediatric abdominal ultrasound as well as FAST/Acute sonography.

Set includes

Before your first use, please ensure that you have all components listed below.



size: approx. 41 x 15 x 15cm
weight: approx. 6.5kg

- a. Pediatric Ultrasound Phantom..... 1
- b. Tutorial Manual (DVD)..... 1
- Storage case 1
- Instruction manual (this leaflet)



⚠ DOs and DON'Ts

DOs

Handle with care

The materials for phantom and models are special composition of soft resin. Please handle with care at all times.

Cleaning and care

Clean the phantom completely every time after the training.
The remaining gel may deteriorate the phantom.

Keep the phantom at room temperature, away from heat, moisture and direct sunlight.

DON'Ts

Never wipe the phantom or models with thinner or organic solvent.

Don't mark on the phantom with pen or leave printed materials contacted on their surface.

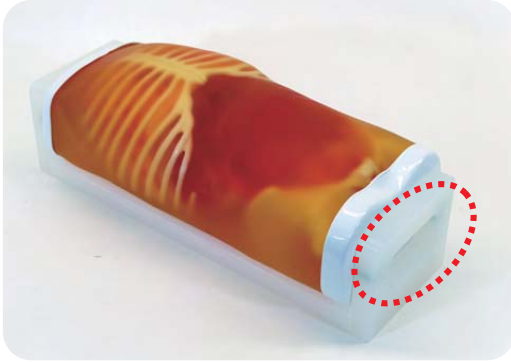
Ink marks on the models will be irremovable.

Please note: The color of the phantom may change over time, though, please be assured that this is not deterioration of the material and the ultrasonic features of the phantom stay unaffected.

This phantom has a thin layer of coating for protective purposes which may cause minor wrinkling. However, it has no effect on the ultrasound image.

Preparation Training

1 Before training



① Move the phantom, be sure to grip both handles at the base.



② Spread ultrasound gel over the phantom body.

2 Training session



The phantom can be scanned with actual ultrasound devices.

* The map of simulated hemorrhages and tumors is on the backside of this manual.

FAST and Acute Abdomen Pathology



pericardial hemorrhage



pleural hemorrhage



hydronephrosis



bowel intussusception

3 After training



Wipe the remaining gel completely by wet tissues.

If remaining gel gets dried up on the body, it may cause scratches and tears on the phantom material.

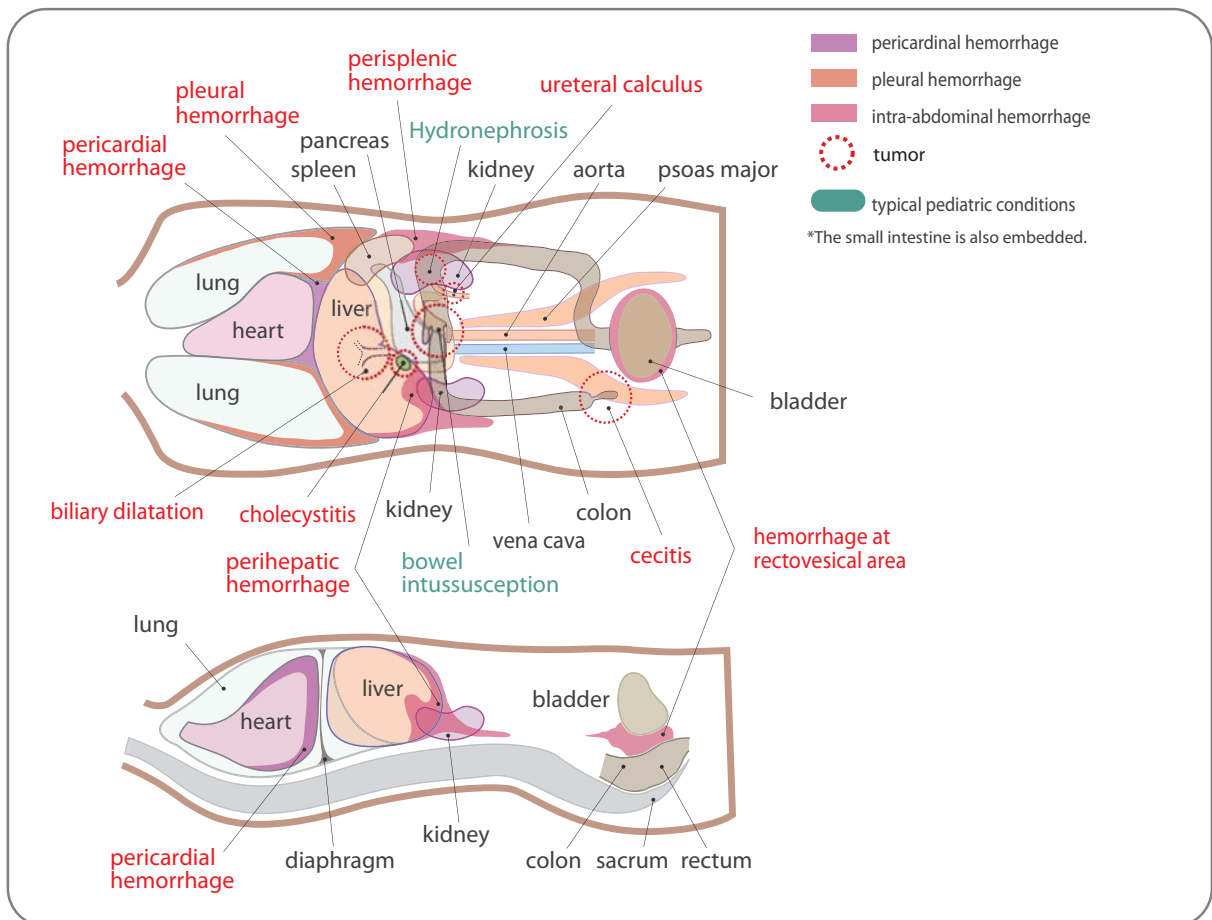


Caution

Do not mark on the phantom with pen or leave printed materials contacted on its surface. Ink marks on the phantom will be irremovable.

Training Skills:

- **FAST procedures:**
Internal hemorrhage at perihepatic, perisplenic, pelvis and pericardium area
- **Sonography for acute pediatric patient:**
Bowel intussusception, cecitis and biliary dilatation



The contents of this manual are subject to change without prior notice.

No part of this instruction manual may be reproduced or transmitted in any form without permission from the manufacturer. Please contact manufacturer for extra copies of this manual which may contain important updates and revisions.

Please contact manufacturer with any discrepancies, typos, or mistakes in this manual or product feedback. Your cooperation is greatly appreciated.

 **KYOTO KAGAKU co.,LTD**

URL:<http://www.kyotokagaku.com> e-mail:rw-kyoto@kyotokagaku.co.jp

Worldwide Inquiries & Ordering
Kyotokagaku Head Office and Factories:
15 Kitanechoya-cho, Fushimi-ku, Kyoto, 612-8388, JAPAN
Tel: +81-75-605-2510 Fax: +81-75-605-2519

Kyotokagaku USA Office: USA and Canada sales and services
3109 Lomita Boulevard, Torrance, CA 90505-5108, USA
Tel: 1-310-325-8860 Fax: 1-310-325-8867