

CT Abdomen Phantom

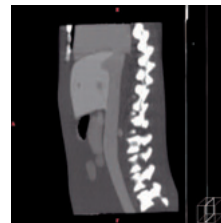
Product No. **PH-5**

This unique anthropomorphic upper abdomen phantom allows obtaining CT images approximate to clinical data.

The elaborate anatomy of organs allows a multi-dimensional approach. Liver, portal vein, bile duct, hepatic vein, hepatic artery, kidneys, pancreas, spleen and IVC are embedded along with synthetic bones. Each individual organ has a particular Hounsfield number close to human organ.



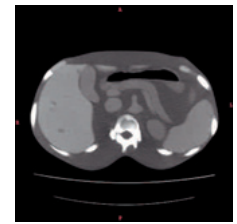
sagittal



coronal



axial



Incorporated anatomy

lungs (no internal structure), heart (no internal structure), liver, portal vein, bile duct, hepatic vein, hepatic artery, kidneys, pancreas, spleen, IVC, spinal column, ribs

Materials: Polyurethane, epoxy resin

Specifications are subject to change.

CT Prostate Phantom

Product No. **PH-46**

Incorporated anatomy

Organs: prostate, urinal bladder with simulated internal fluid, seminal vesicles and rectum.
Bones: L4, L5, pelvis and femurs (partial).

HU numbers at 80KeV

Prostate: 50

Seminal vesicles: 50

Urinal bladder: surface 30, internal fluid 0

Rectum: surface 70, simulated cavity -800 (urethane foam)

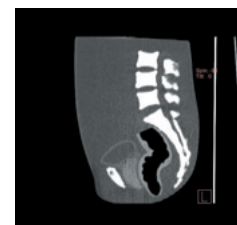
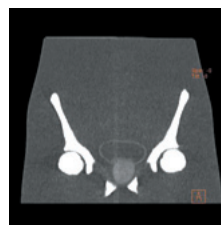
Soft tissue 40

Specifications are subject to change.



Product image

CT images



Size: approx 14 (in) height

KYOTO KAGAKU USA Office:

3109 Lomita Boulevard, Torrance, CA 90505-5108, USA

Tel: 1-310-325-8860 Fax: 1-310-325-8867

www.kyotokagaku.com

rw-kyoto@kyotokagaku.co.jp